



Deluxe step side guide assembly instructions

These instructions are also available on the web at [www.captainschoicelifts.com](http://www.captainschoicelifts.com)

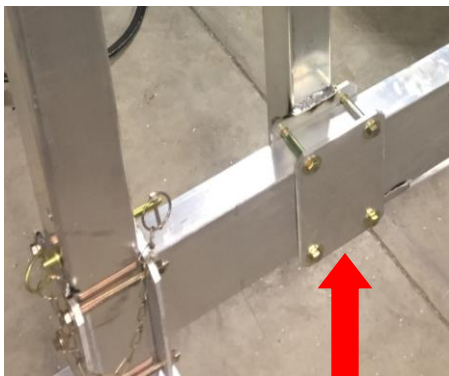
Contents:

1. 2 - Carpeted bunks
2. 4 - Upright Posts
3. 4 - Clamp plates
4. 16 - 3/8" x 3 1/4" bolts
5. 16 - 3/8" nylock nuts
6. 32 - flat washers
7. 4 - Clevis Pins

Assembly:

1. Fasten Upright Posts to the inside of front and rear beams near foot pad, leave loose for now using:

- A. 4 - Upright Posts
- B. 4 - Clamp plates
- C. 16 - 3/8" x 3 1/4" bolts
- D. 16 - 3/8" nylock nuts
- E. 32 - flat washers



2. Insert the square tubing welded on bottom side of the carpeted bunk support tube into the upright posts and pin using:

A. 4 - Clevis Pins



3. Adjust height and width according to your boat. Tighten all hardware.

This concludes the assembly instructions